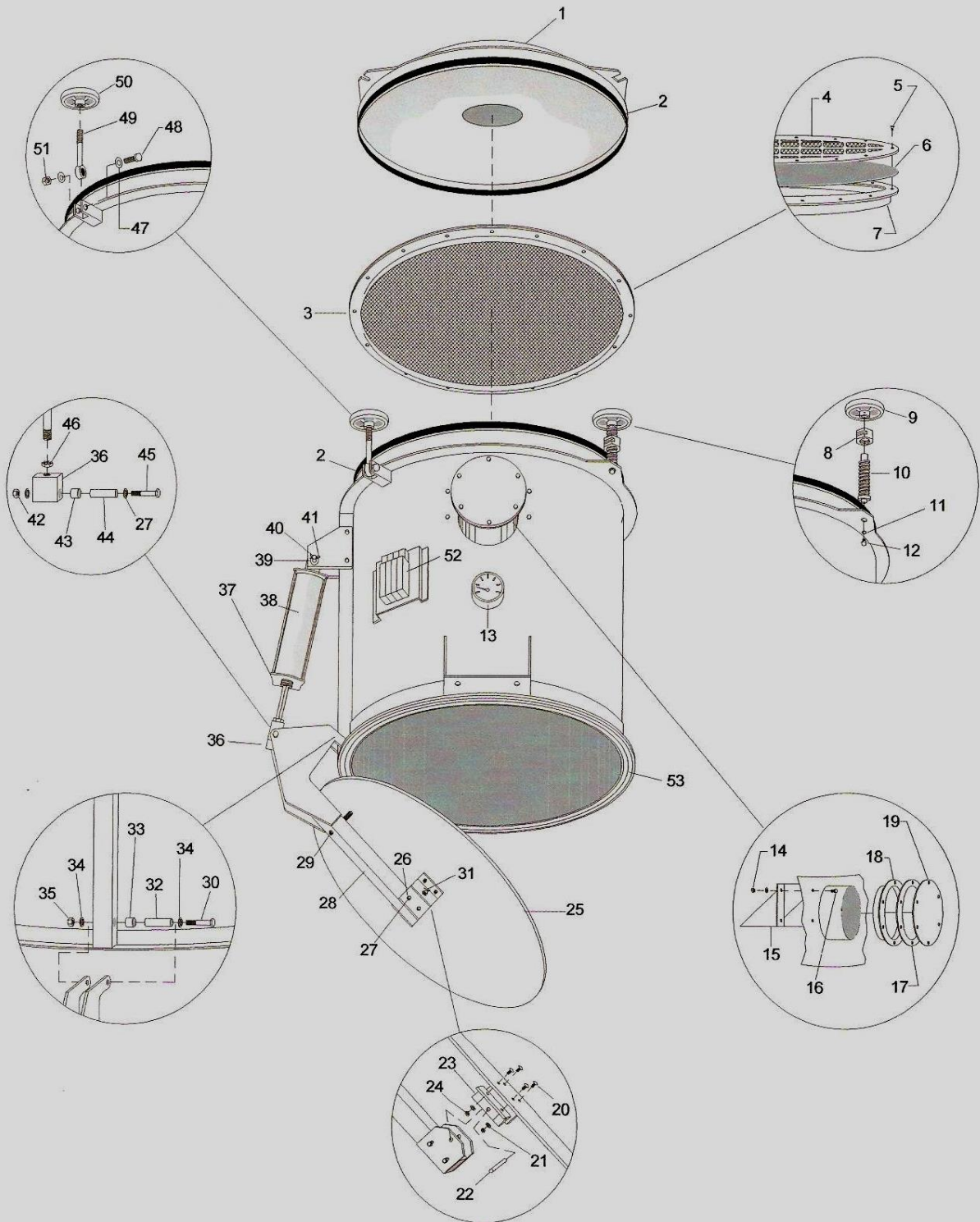


MODEL 36 INCH

# ALDRICH PRIMARY RECEIVER TANK



ITEM	DESCRIPTION	PART NUMBER	QTY.
1	Dome Assembly w/ 4 Lifting Tabs (Specify Outlet Size)	DT-03-600-2	1
2	Top/Bottom U-Shaped Rubber Gasket - 10' ea.	923	2
3	Screen Assembly	DT-03-610	1
4	Top Screen Plate	DT-03-610-A	1
5	1/4 - 20 Allen Head Bolt	1/4-20 ALLEN	16
6	70 Mesh Screen	DT-03-606-SS	1
7	Bottom Screen Plate	DT-03-610-B	1
8	1-1/4" Acme Threaded Nut	DT-03-608-D	2
9	5" Hand Wheel w/ Keyway Slot	92311A534	2
10	1-1/4" ACME Threaded Rod	DT-03-608-B	2
11	1/2" Flat Washer	1/2WASHER	2
12	1/2 x 1" Hex Head Bolt	1/2X1HEXBOLT	2
13	Vacuum Gauge	9749297	1
14	5/16" Lock Nut	5/16LOCKNUT	4
15	Dog House	DT-02-508	1
16	5/16" x 5/8" Hex Head Bolt	5/16X5/8HEXBOLT	4
17A	1/8" x 6" Rubber Gasket	DT-02-702-6	1
17B	1/8" x 8" Rubber Gasket	DT-02-702-8	1
18A	6" Angle Ring	000526	1
18B	8" Angle Ring	000530	1
19A	6" Block Off Plate	DT-02-703-6	1
19B	8" Block Off Plate	DT-02-703-8	1
20	3/8" x 1-1/4" Allen Button Head	3/8X1-1/4ALLEN	4
21	3/8" Flat Washer	3/8WASHER	4
22	3/8" ⌀ x 3-3/4" Steel Pivot Pin	DT-01-803	1
23	Dump Door Aluminum Angle Mounts	DT-01-802	2
24	3/8" Lock Nut	3/8LOCKNUT	4
25	3/8" x 40" Aluminum Dump Door	DT-01-801	1
26	3/8" x 7/8" Hex Head Bolt	3/8X7/8HEXBOLT	4
27	3/8" Flat Washer	3/8WASHER	4
28	Pivot Arm Assembly	DT-01-100	1
29	Door Tension Spring Assembly	DT-01-400	1
30	3/8" x 3-1/2" Hex Head Bolt	3/8X3-1/2HEXBOLT	1
31	1/8" x 1-1/2" Cotter Pin	1/8X1-1/2-CP	2
32	5/8" OD x 3/8" ID Steel Bushing (2-1/8" lg.)	DT-01-104	1
33	Oilite Bushing	UAA-710-3	2
34	3/8" Flat Washer	3/8WASHER	2
35	3/8" Lock Nut	3/8LOCKNUT	1
36	Door Cylinder Clevis	DT-01-200	1
37	Cylinder Reinforcement Bracket Assembly	DT-01-905	1
38	3" x 10" Pneumatic Door Cylinder	DT-01-901	1
39	1/2" x 3-1/2" Cylinder Pin	DT-01-904	1
40	1/2" Flat Washer	1/2WASHER	2
41	1/8" x 1-1/2" Cotter Pin	1/8X1-1/2-CP	2
42	3/8" Lock Nut	3/8LOCKNUT	4
43	Oilite Bushing	UAA-710-3	2
44	5/8" OD x 3/8" ID Steel Bushing (2-1/8" lg.)	DT-01-104	1
45	3/8" x 3-1/2" Hex Head Bolt	3/8X3-1/2HEXBOLT	1
46	Cylinder Rod / Clevis Jam Nut	75CNFHS	1
47	5/8" Flat Washer	5/8WASHER	4
48	5/8" x 2-1/2" Hex Head Bolt	5/8X2-1/2HEXBOLT	2
49	Drop Down I-Bolt (6-1/2")	6066K21	2
50	5" Hand Wheel Drilled and Tapped for I-Bolt	92311A534B	2
51	5/8" Lock Nut	5/8LOCKNUT	2
52	Solenoid Bank	C511ABB53A	1
53	Triangle Gasket for Bottom Dump Door (10' Required)	TRE	1